

---

*West Midlands' N' Gauge Club*

---



# Newsletter



---

## FROM OUR CHAIRMAN

Another year is just about coming to an end. It's been 12 months' of ups and downs. We have our new clubroom thanks to Tipton Green Methodist Church, a much more pleasant and spacious venue than our old room next door. We've met on schedule for the first time since 2019. On the negative side, two of our members have had to stop coming for health reasons, Ken Daniels and Lin Dempster, and we shall miss them. On the plus side, however, new member Michael Spencer has just joined us.

As will be explained at the AGM, the club is in a sound financial position in spite of missing meetings during the Covid lockdowns. We have had all three of our current exhibition layouts out at shows (Waterstock doesn't leave home now) and we've got some good publicity.

On a sad note, Vince Painter, our newsletter editor, has decided it is time to hang up his keyboard after many years. I think Vince's newsletters have had a style that is unique, humorous and informative all in one. Vince, your contributions will be missed by your readership of over 400 and you will be a hard act to follow. Vince hasn't been in good health himself recently and has just undergone a triple bypass so we wish him well and understand that he has cleared the decks to concentrate on his recovery.

Our website has finally 'passed on' after many years of care from former member Mike Turner but watch this space for a new, sparkling edition coming shortly. This lack of a website seems to have sparked rumours of the club's demise; these rumours have been tackled head-on.

Unfortunately, we had to withdraw Whartson Hall from the Warley NEC Show. We had an outbreak of Covid in the club affecting 6 members but unfortunately it affected a key member of the operating team and we were unable to go. Hopefully 2023 will be better in this respect.

My thanks are due to everyone who has helped in any way, whether it be in supporting the club at shows or generally helping to manage the club's business. I've already mentioned Vince and the newsletter; Edgar Mason has done his usual thorough job of managing the funds of the club, aided at times by Phil Hunt. David Griffin has continued to work effectively and efficiently to manage layouts going out to the various shows that we have visited.

*Jeremy Edwards*



## NEWSLETTER DATES



Spring: March 2023  
Summer: June 2023  
Autumn: September 2023  
Winter: December 2023

Just a reminder to all Club members:  
to be included in the next Members' Contributions section, your article needs to be in by  
**Thurs 30th March 2023**, Volume 26 Issue1 should be published in time for Easter. *Ed*

CHAIRMAN: Jeremy Edwards on 07720 902490



Treasurer: Edgar Mason  
Assisted by : Philip Hunt

Exhibition Co-ordinator: David Griffin  
[ldavejgriffin@outlook.com](mailto:davejgriffin@outlook.com)

Editor: Vince Painter  
Website Developer: to be confirmed

WMNGC  
**27<sup>th</sup>**  
YEAR

**Black Friday has failed me.**  
**I ordered Four Kindles off Amazon and they sent me a 2 Ronnie's DVD 😂**

**E**ditorial

My life has been saved again by our wonderful NHS, thank you to all the nursing, theatre and administration staff and not forgetting everyone who has donated - voluntarily or otherwise - part of their pay to it over the years'.

**I** my final editorial, just when I was getting into it! I have decided to talk about me, for a change. A good friend of mine, ours even, recently explained, in a biography, that my reign as editor of this Newsletter had a major factor in making a difference to my life - absolutely true. It has allowed me to, with some subtlety, express my own personal views, sometimes vaguely political (on which subject I am no expert), being mainly informative, in a way that mildly amused and, hopefully, injected a modicum of humour - life can get too serious sometimes, don't you think?

**H**owever, I couldn't have done the job without help from so many people, which wasn't always forthcoming, so, nonetheless *I produced Newsletters, and Interim Newsletters, especially during those uncertain pandemic times, learnt to play guitar*

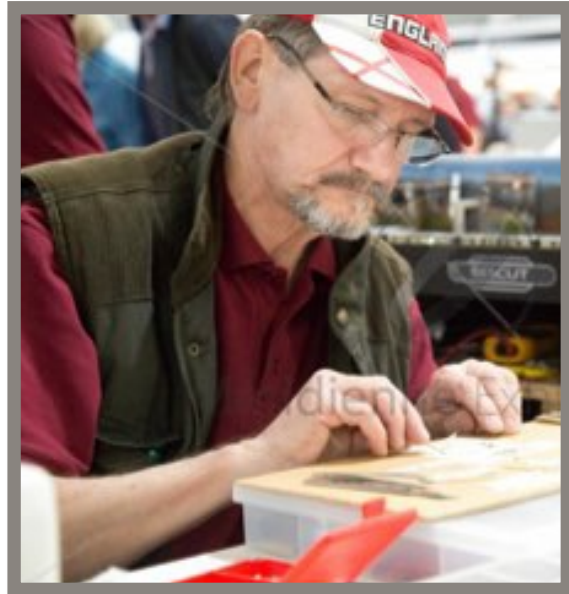


Image ©meridienneexhibitions2018

*to beginner's standard and have aged quite well, all things considered - said my promoter.*



So, as someone who has been doing the job since 2015, I want to be remembered as the person who introduced the line "I make no apologies for my *raisin d'âitre*, or the lack of nuts" into model railways, knowing that no-one would understand what I was talking about, thus making the role of editor so much easier.

Perhaps one day I'll make a layout called '*raisin d'âitre*', but until then I've other things to be getting on with.....

*Recovering from a CABGx3, preparing for full-time retirement, as if. Doing as I'm told by my considerably wiser other half and campaigning for BBB, answers on the back of a postcard please.*

# Editorial part 2

Well if you can't have a two page editorial as your last one when can you?

During my private visit to the Trent Valley Model Railway Society I started to learn a new skill, which, maybe, I could do without - where's the fun in set, set, set encode, set, twiddle some settings a bit more - stand back and watch, oh like train spotting, that's awright I suppose.

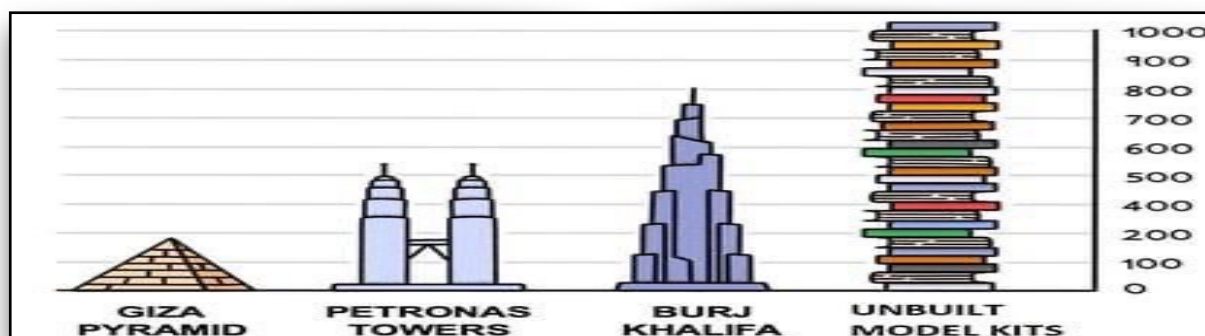
To be totally honest, as I always try to be of course, DCC sort of passed me by, however, I am really willing to learn another different skill - watch this space....



More can be seen on TVMRS website at <http://www.tvmrs.org.uk>

Anyway back to the subject in hand - me - a recent study indicates that the sale of railway model kits at exhibitions around the country is purely a cover for the real reason, mainly, men travel the length and breadth of this great nation of hours. They all spend hours huddled up in queues with people of a certain predisposition, ferreting through mounds of brightly coloured boxes which house, variously, new, used, working or 'in need of attention'; filling their carrier bags and holdalls with ephemera to cover up the *real purchases at the bottom of the bag*, that loco they've been looking for for years, at a great price - even cheaper than eBay (yeh ok) - hoping to get passed security undetected when they get home. Yo cor beat it for an adrenaline rush without too much physical exercise.

What a fantastic life it will be, *shh don't tell my wife*.....



Now it's time to drag all those kits out of my modelling drawers, and maybe pull my stock boxes out from under the bed, dust them off and look forward to being fit enough, soon, to go to our wonderfully friendly, little Club in Tipton - in the heart of the Black Country - and play with some trains.

VP



**MEMBERS' SUBMISSIONS** by *Vince Painter*

Kevin Ellis - WALSALL - Images courtesy of KEN JONES © 2022

*I have received many potential articles from Ken over the years. This time I have decided to use one which spans the interests of the majority of our members, and may encourage more of us to visit Kevin's very impressive work when they are able.*



*Having been born and bred in Bloxwich and schooled in Walsall, I also visited the Co-op dairy in Midland Road at 5am most mornings in the school holidays,*



*right next to the railway of course - great planners them Victorians - That was my first 'summer' job, on a milk round with my dad's mate, I think his name was Roy, the round was over Short Heath.*



**Kevin Ellis' WALSALL continued**

*And, as I am now working in the town centre, I can wholeheartedly confirm the accuracy of this layout, the town has changed a lot, mainly shop front differences and the fact that the station facade was destroyed by the developers of the Saddlers Centre to fit in a flagship Marks and Spencer, come back please ! (we are Walsall).*



*Many happy memories.*



VP  
UTS



**SUGAR CREEK MISSOURI** *By Nigel Harrold*



*.....engineering works continue, but due to strikes, labor disputes and ongoing work commitments, the promised update article has been postponed, we all know where our priorities lie during these challenging times.....*

There was of course another reason; that of it being the testimonial appearance of *Tipton Sub Division*, under current ownership, at the NEC, Brumidghum, during the last weekend in November, how do you find the time Nigel?

*Ed*



## NEC WARLEY 2022

Here's just a few images from the major exhibition that was Warley at the NEC Birmingham, England (formerly in the European Union) weekend of 25/27 Nov.



For more detail and video footage, see Trains in the Attic Channel at:

Trade Stands <https://youtu.be/1tYV-xvE5IY>

Layouts <https://youtu.be/4SbdQC4RZK4> Richard's top 11







---

## EXHIBITION DATES 2023

Dates taken directly from 'emails to the editor', for which I thank you all *Ed.*

### CLUB LAYOUTS: TBC

#### Ken Jones

Sat 11th March - **MALKEN** - Wombourne (first public appearance)

Sat/Sun 29/30th April - **SEEN BETTER DAYS** - Syston MRC (unconfirmed)

Sat 13th May - **PENDING** - Bournville

Sat/Sun 9/10th September - **JONES OF TAUNTON** - TINGS

Sat 7th October - **WATERFALL JUNCTION** - Telford

Sat 28th October - **JONES OF TAUNTON** - Birmingham

#### Philip Hunt

TBC:

#### **Shows for next year:**

Provisional invite for Cradley Heath for **new layout** in October '23 and Shoeburyness in 2024 for the **Garden Railway**.

**Tony & Jane** - to be confirmed

#### **Nigel Harrold** with **Sugar Creek Missouri**

Sat 11th March - WOMBOURNE

Fri/Sat 14/15th April - SUTTON COLDFIELD

Sat/Sun 22/23rd April - AMERICANA WEEKEND Burton-upon-Trent

Sat/Sun 6/7th May - SEVERN VALLEY RAILWAY Open Weekend

Sat 3rd June - CRAVEN ARMS MRC - Ludlow Racecourse

Sat 16/17th September - REDDITCH


Sat 7th October - TELFORD



ENERGY SAVING TIPS:

**Which?**

## Ease the squeeze on energy bills



[which.co.uk/cost-of-living](https://www.which.co.uk/cost-of-living)  
**4 clever ways to use tech to cut your bills**

**Learn More**

<https://www.which.co.uk/news/article/four-clever-ways-to-use-tech-to-cut-your-energy-bills-a8vL90n5mQvS>

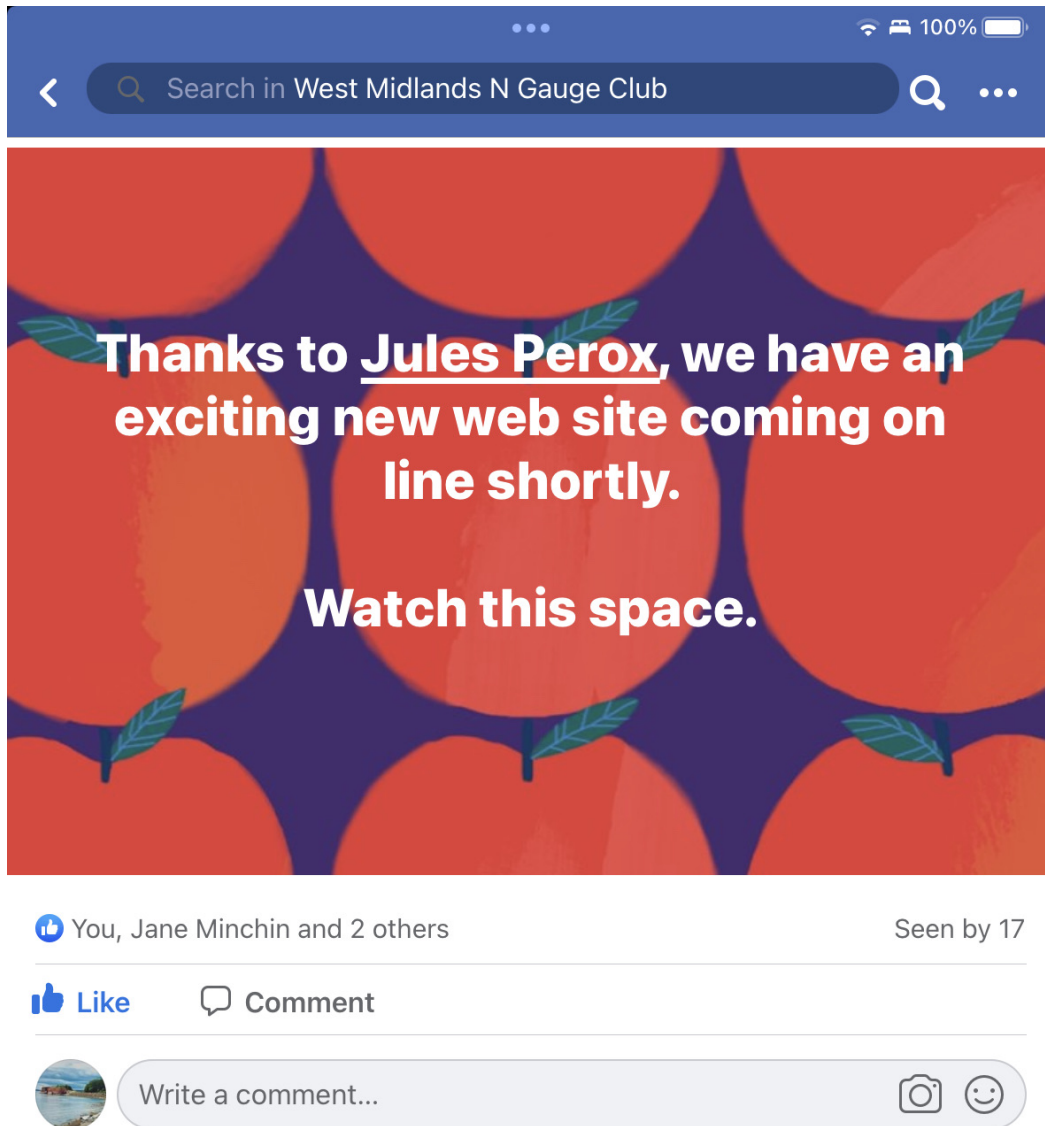


## ONLINE REPORT

With the Club going from strength to strength on the Exhibition Circuit, let's continue to spread the word and keep our fantastic hobby in the public eye...

### STAR FACEBOOK PAGE

Just type in **West Midlands N Gauge Club** - that's what I just did !



Don't forget UK Model shops for advertising YOUR layout & keeping abreast of goings on around the country - click here to access Ken Jones' collection  
<https://www.ukmodelshops.co.uk/layouts/kjl.html>

Don't forget also to search Facebook for **WorldWideGroup of The NGS**  
(You don't have to type it in red)

And see the latest in all things N' Scale and Worldwide Railways



# COMPETITION PAGES

Here we go again, boys and girls, WORD-SEARCH No.25/4/1

Print off this page, then find the MODELLING THEMED words listed below.

Good luck and take care during those long winter nights.

BLADE  
CARDBOARD  
CONTROLLER  
CORRUGATED  
ENAMEL  
METCALFE  
PAINTBRUSH  
PLASTIC  
PVA  
RATIO  
RODDING  
SIGNALLING  
STATION  
SUPERGLUE  
TURNOUT

B	S	U	P	E	R	G	L	U	E	X	W	C
E	S	I	G	N	A	L	L	I	N	G	A	P
Y	D	R	B	X	W	N	P	Z	U	R	A	E
K	A	A	D	O	I	T	A	R	D	I	L	B
M	P	C	L	E	Q	M	W	B	N	P	E	M
G	L	P	T	B	T	Z	O	T	X	N	M	E
N	A	H	B	U	A	A	B	V	O	T	A	T
I	S	R	J	V	R	R	G	I	J	P	N	C
D	T	W	P	D	U	N	T	U	P	L	E	A
D	I	H	Z	S	K	A	O	R	R	O	C	L
O	C	F	H	Y	T	C	P	U	X	R	J	F
R	U	H	C	S	H	Q	I	M	T	Y	O	E
Y	E	I	R	E	L	L	O	R	T	N	O	C

Here's a WORD PUZZLE for you to pass those days between  
Club Meetings!

How many words of 4 or more letters can you make out of:

**“TELEGRAPH POLES” ?**

SO, PRINT OFF THIS PAGE and use the area below for your answers:

## PREVIOUS COMPETITION

Well, in case you don't know already, this is my last newsletter and, for the first, time nobody got this one!

So, what on earth is it?

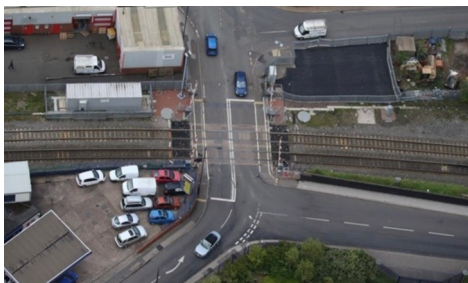
Am I the only person reading these newsletters, who lives in Bloxwich? Is there some apathy around, or are you just too tired, having reached page 14, done the word-search, and word puzzle and decided enough is enough. Anyway, enough of my ramblings, here's the answer.

*This is a view looking east towards Bloxwich high street, taken from the highest point of the footbridge over the upgraded, electrified Chase Line from Walsall to Rugeley. The remnants of the old, iconic, Station Hotel can be seen in the foreground, now repurposed as living accommodation.*



If you'd like to find out more about this spectacular 'footbridge', follow the link to a walk-through video:

[https://www.google.co.uk/search?client=safari&hl=en-gb&q=Bloxwich+bridge&sa=X&ved=2ahUKEwjD0Kn\\_pNX7AhXHlqQKHbOKAIEQ1QJ6BAgSEAE&biw=1194&bih=793&dpr=2#fpstate=ive&vld=cid:3cc3abaa,vid:8UCREYsTVMs](https://www.google.co.uk/search?client=safari&hl=en-gb&q=Bloxwich+bridge&sa=X&ved=2ahUKEwjD0Kn_pNX7AhXHlqQKHbOKAIEQ1QJ6BAgSEAE&biw=1194&bih=793&dpr=2#fpstate=ive&vld=cid:3cc3abaa,vid:8UCREYsTVMs)



The old automatic barrier crossing, which had superseded the previous hand-wheel driven twin double-gated crossing, was removed and the boundary secured forever.

*The new footbridge with ramp access was finally signed off a couple of years ago, after two years of on-site problems - it is an amazingly complicated construction and must be seen to be believed.*

Yes, it can be seen from space, as is proven in this image from our local raisinaut, it's not the clearest image, but if you look closely, and think post office queue...



SUPPLIERS

# OXFORD



<https://www.oxforddiecast.co.uk/collections/1-148>

An festive example page from their web site.....

<https://www.oxforddiecast.co.uk/collections/christmas-gifts/products/scania-t-cab-box-trailer-coca-cola-xmas-ntcab007cc>



## WORLD OF RAILWAYS



News | Forum | Membership

### **Layout line-up confirmed for The Festival of British Railway Modelling 2023**

**Are you ready for an action-packed weekend?**

Our 2023 show season kicks off with the Festival of British Railway Modelling, which is making a welcome return to Doncaster Racecourse and will take place across the weekend of February 11-12th, 2023.

<https://www.eventbrite.co.uk/e/the-festival-of-british-railway-modelling-2023-tickets-408038974557>



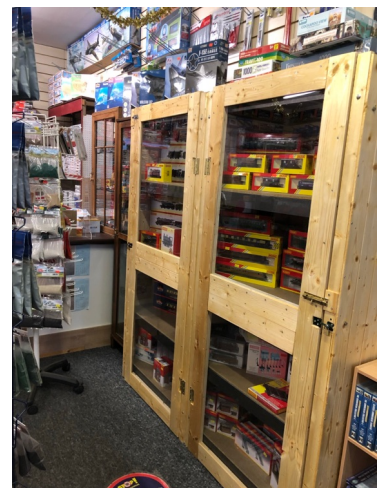
## MODEL SHOPS

Come and see Ritchie in his well stocked shop in BLOXWICH.  
Yes there's loads of N' Scale, as well as tools, glues and paints, and  
***plenty of free parking 20 yards away.***

<https://www.scalemates.com/shops/shop.php?id=2941>

go on! click the link above for ***address details and opening hours***, it's a really friendly shop, all current precautionary advice, and more, is being adhered to - you can mention Vince's name on entry and you'll be welcomed heartily.

*(must remember to copy newsletter to Ritchie - note to self Ed).*





### RETURN JOURNEY

*Otherwise known as any other business & raisins to be cheerful 1,2,3.....*

- 1 It is our Club's 27th year, and we're making great use of our renewed premises.
- 2 The WORLD CUP FOOTBALL started on the day of my discharge from hospital, almost like it was planned!
- 3 I finally figured out the evolution of man - well me.....



*Please note that any recommended suppliers, ideas or suggestions found in this not-for-profit, and totally free newsletter, are for readers' personal use only, any inaccuracies are regretted and not deemed to be life-threatening.*

#### CREDITS

All images in this issue are submitted, in the main, by the author of each article, any copying, scanning or pasting etc, etc, blah, blah, are at your own risk - GDPR apply.

Special Thanks to the following Club Members for their articles:

Everyone on our Facebook pages and

***Nigel Harrold, Ken Jones & Vince Painter***



Edited Using Pages app  
on Apple iPad Pro 2019 running iOS for iPad v15.7.1 iOS 16 coming soon  
(other devices, apps & operating systems are available - apparently)Ed





## NOTICEBOARD INFORMATION

Meetings will be(or were) as follows, and are always between 2 and 5pm at:

Tipton Green Methodist Church Hall  
Park Lane West  
TIPTON  
West Midlands  
DY4 8LD

### WMNGC Proposed MEETING DATES in 2023

Saturday 7th January  
Saturday 21st January  
Saturday 4th February  
Saturday 18th February  
Saturday 4th March  
Saturday 18th March  
Saturday 1st April  
Saturday 15th April  
Saturday 6th May Coronation Day  
Saturday 20th May  
Saturday 3rd June  
Saturday 17th June  
Saturday 1st July  
Saturday 15th July  
Saturday 5th August  
Saturday 19th August  
Saturday 2nd September  
Saturday 16th September  
Saturday 7th October  
Saturday 21st October  
Saturday 4th November  
Saturday 21st November  
Saturday 2nd December (AGM)

NB

Saturday 6th May has been announced as Coronation Day. I am assuming that meeting on that day will not be possible/feasible. Alternatives are meeting on Saturday 29th April instead – there are 5 Saturdays in April (note we have a booking for Bloxwich), cancelling the date completely or re-jigging May to 13th & 20th or 13th & 27th.

Jeremy Edwards

9.10.22

PS

Sorry if this has been addressed already, but I thought I'd add it rather than not, as a reminder *Ed.*

**Meetings will be held under local guidelines, in consultation with our hosts.  
Any changes will appear in our Newsletters, with emails/post & calls for urgent info.**