
West Midlands' N' Gauge Club



Newsletter

*FROM OUR CHAIRMAN**Shhhh Don't Mention The 'C' Word*

Since our last newsletter I have been amazed at how active our small club is. Moving from being back-up for Edgar, when he was unable to attend meetings, to becoming chairman, has been quite a transition. I've gained a greater appreciation of what the club and members are doing in the N Gauge world.

Apart from attending meetings and running trains on our layouts, members have been very active on the exhibition scene since things started to re-open. Whilst we didn't get to **TINGS** with a club layout, we've had two club layouts out in the last couple of months: **Whartson Hall** with a team of 4/5 operators was at the small *Sutton Coldfield* show where our layout was very well received; **Tipton Hills** came out of hibernation for the *Birmingham MRC* show with a smaller team of 2. This can only happen with the help and enthusiasm of members and I need to pay tribute to David Griffin for organising this with members David Evans, Phil Hunt, Chris Thornton and Jim Webster. We already have 2 bookings for **Whartson Hall** for 2022 and hopefully we can find some more opportunities.

In addition to club layouts being out and about we have had several members showing layouts at a number of local and not so local shows. Our irrepressible former chairman, Ken Jones, has shown a number of his varied layouts around the Midlands, Nigel Harrold has shown Tipton Sub-division several times and Jane and Tony Minchin have been out and about with various layouts. This culminated at the *Birmingham MRC* show where we had **Tipton Hills** plus 3 members' layouts making up 4/5ths of the N Gauge on show!

Whilst all this has been going on we have managed to maintain our Saturday meetings although, a couple of times, attendance was a little depleted as a result of show activity.

As a consequence, we have managed to maintain financial stability and should end the year in a reasonable position with little if any need to dip into reserves. At the time of writing this we are also heading towards our 2021 AGM which, hopefully, we will be able to hold face to face and not as an online skeleton event.



What have I been up to? In some ways, 'not a lot'. My modelling stalled for a while, partly as a result of not being able to get hold of some key track parts although things are starting to progress again.

I'll update on this when I've got a bit further.

Club-wise apart from keeping things ticking over and keeping an eye on meetings I've been out to shows in an official capacity a couple of times. At the *Sutton Coldfield* show I was there for the morning helping to set up and doing 'front of house' work until Phil Hunt came to relieve me, so that I could open up at Tipton for a club meeting. I also went to

the *Birmingham* show, ostensibly as Nigel's helper

but was available as a stand in for anyone else although I did get to drive a Canadian Pacific manifest on Tipton Sub-division.



It has been interesting to visit some of the shows. I went to *Tutbury Castle* for one of the early shows and thought attendance was not very good but both the *Sutton* and *Birmingham* shows were well attended. Hopefully as, or if, Covid becomes less of a problem we will see the show scene return to something like its former glory. A lot depends on the venue requirements and I know some make it difficult for smaller clubs to find enough people to cover all the requirements or in a few cases make it impossible to have enough people in the venue to actually have visitors.

Whilst some of the bigger shows have gone ahead it's noticeable that the *NEC* show has been postponed again for fully understandable reasons. We were invited this year with **Whartson Hall** and I hope that we can take the layout to the 2022 show.

Jeremy

STOP PRESS: Whartson Hall has been accepted for Warley (NEC) 2022.



NEWSLETTER DATES

Spring: March 2022
 Summer: June 2022
 Autumn: September 2022
 Winter: December 2022



Just a reminder to all Club members:
 to be included in the next Members' Contributions section, your article should be with me by
Thurs 10th Mar 2022, Volume 25 Issue 1 *will* be published in time for St Patrick's Day 🍀 Ed.

CHAIRMAN: Jeremy Edwards on 07720 902490



Treasurer: Edgar Mason
 Assisted by : Philip Hunt

Exhibition Co-ordinator: David Griffin
davejgriffin@outlook.com

Editor: Vince Painter
art1san1957@icloud.com

WMNGC
26th
 YEAR



Scammers ALERT

There ARE scams on SOME ON LINE SHOPS - whereby items are advertised at very attractive prices, but the seller MAYBE a scammer.
 After you have paid they order from a real supplier using your name and address but with stolen credit card details.
BEWARE , ESPECIALLY AT THIS FESTIVE TIME
 Either way, the scammer gets your money.
 So be very wary of deals that seem TOO CHEAP - they may not exist.

Remember the old motto: If it's too good to be true - it probably is!!

*E*ditorial

We are fully vaccinated and hope you're the same. Some didn't get the chance and I'd like to dedicate this editorial to all those special people we lost during the pandemic - you know who they are.....



Is it just me or does it only seem five minutes since Xmas 2020, the Strictly final 2020, I'm a Celebrity and our last Newsletter? Where did we go on holiday last year? - oh, sorry - we didn't 🙄

After the latest revelations from the lectern I will make no further comment about our National situation - just stay safe all and I hope to see you soon.

I am really humbled to have received so many articles for publication (albeit from the usual suspects!), that I have found it difficult to choose, I apologise for any omissions, but hey, that's the job of the Editor-in-chief and his long-suffering assistant.

Have a great read, don't forget the puzzle and competition pages, and support your local model shop! - Keeeeeeeeep MODELLING. VP

MEMBERS' SUBMISSIONS

KEN JONES' Not so Little Bits

Text of a letter from Leslie, talking about my neck of the woods (Ed)

"Hello Ken,

I've just found your email on my i-pad, and don't know how I could have missed it for nearly over a week (*we've all done it!Ed*) so I'm sorry for not replying sooner.

Just a brief mail to say many thanks for taking an interest. I'm looking forward with hope that one or more of your members will have some information.

Chaps in the Chester club (I live in Neston on the Wirral) are very knowledgable and always keen to share any information right down to wheel diameters on black fives for example! But none are or have been local to my old haunts at Ryecroft or Walsall station!



Anyway I'm looking forward to receiving your newsletters.

Thanks again.

Kindest regards"

Leslie sueles@uwclub.net

Leslie, I found some very useful information on the area, during my research into Ryecroft for my N Gauge Layout Bescut & Walshed, in Jack Haddock's book Walsall's Engine Shed.

Vince

And as a follow-up to Leslie's previous...

“

Hello, Ken, Vince and any interested members of your club. I've no idea how I came to get your newsletters, but I do, and always enjoy reading them. So thank you and keep them coming please. I'm a member of the Chester N gauge club and taking years to build my layout! Though enjoying it and especially sharing it with my grandchildren Freya 4 and Jake 7. Me? I'm 73 and originally from Walsall where I spent



my trainspotting days.

My main reason for the email is that I'm researching my paternal grandad who worked on the railway as a driver during LNWR, LMS and BR days. This started when my brother found an old photo of him stood in front of Prince of Wales class 5778. Why and when was this? You can tell a lot by looking at the loco, lamped up for local freight standing in front of Ryecroft shed having been coaled and ready to go. I have other photos and a fair amount of information I'm putting together too.

Can any of your members if willing, offer any information about the photo and loco?

I've got a Union Mills model of it which is a great model. Here's the photo, and another of North Walsall junction where I did some of my train spotting sitting on the signal box steps. I lived just along the road.

Does anyone have pictures of North Walsall station itself? I have the usual ones of the site off UTube etc.

Well thats all for now” LJ sueles@uwclub.net

RODNEY HODGE**Dashing through the Snow**

Here are pics of this year's model made for the nieces Emma & Lucy.

Not a loco but a Sleigh.

I got most of the wooden items from THE WORKS, the dollies from Home Bargains.

Had to buy four Reindeer to get the effect I wanted, lifting the fret off two of the reindeer was fretful, but took my time. RH



EXHIBITION DATES

Here's the latest update, to the update to the update - oh sorry wrong page (don't mention the 'C' word).

Dates taken directly from emails to the editor, for which I thank you all *VP*.

From Rodney Hodge

"Christine and I have an invite to:

Model Rail Scotland Feb 2022 and are taking **THE QUARRY** (With **Bill & Ben**).

Hope the Kerfuffel in Scotland is all over by that time.

We have another later on in the year but not yet confirmed."

From Ken Jones

Sat / Sun 5th / 6th Feb Stafford **Waterfall Junction** / **The Works** / **Salverton**

Sat 5th March Wombourne **Jones of Taunton** if ready – if not it will be **Le Club 143**

Fri / Sat 22nd / 23rd April Sutton Coldfield **Waterfall Junction** / **Kenstadt**

Sat / Sun 7th / 8th May Syston MRC show **Le Club 143** - **NEW LOCATION** - Barkby Thorpe

Sat / Sun 21st / 22nd May Lutterworth **Le Club 143** and **Seen Better Days**

Sat / Sun 10th / 11th Sept TINGS **Seen Better Days**

Sat Oct 1st Telford **Jones of Taunton**

Sat 15th October Wombourne **Le Club 143** or **Jones of Taunton** – depends which goes in March

Sat 29th October Birmingham **Jones of Taunton**

Philip Hunt - with Greenwood Railway

Wombourne 5th March 2022

Severn Valley Railway 7th and 8th May 2022

And Potentially

Birmingham Show October (took details after Cradley Heath)

Shoeburyness November -?; Was invited down but Covid stopped last two years so might be on the calendar for next year TBC

Tony & Jane

In March 2022 attending Wombourne with **Arley** station.

October 29th 2022 Birmingham exhibition at Castle Bromwich with **Arley** Station.

Nigel Harrold

Up to now I have **Tipton Sub-Division PA** booked for the 6 shows I've listed below:

Feb 5th & 6th - Stafford Show Ground

April 23rd & 24th - Americana Open Weekend at Mech Models, Needwood, B.O.T

May 7th & 8th - Severn Valley Railway Open weekend.

August 20th - Craven Arms M.R.C at Ludlow Racecourse.

October 8th - Cradley Heath.

November 27th & 28th - Warley Show.

*JoT TINGS (see what I did there? Ed)**Storytime*

As the fleet of "Jones of Taunton" expands we have decided to keep some of the vehicles out-stationed at Sandborough Depot near Grimsby - the home of NGS and MBF member Malcolm Hall and his large fleet of N gauge buses and coaches.



Malcolm has been painting our vehicles as we acquire them so as we have been looking at using his facilities for maintenance when vehicles not at our home base, accommodation for vehicles when vehicles not at home base, shared ticketing, shared

drivers, ability to offer extra pick up points for coach tours etc.

Here are pictures of 2 N gauge vehicles that will be out-stationed at Sandborough Depot, a midi coach and a more substantial vehicle as we increase our touring business with customers returning following the pandemic.. Some 8 vehicles are currently in the workshops at Sandborough Depot, 4 of which will come south to our home base.



Pictures by Malcolm Hall

Story by Ken Jones

additional reporting will follow

Full scale coaching advice from D. Bickley consultancy

COMPETITION PAGES

Or something to do after the Xmas pudding's gone down!



Here we go, boys and girls.

WORD-SEARCH No.24/4/1

Print off this page, then find the words listed on the left, in the puzzle on the right - good luck and enjoy your Christmas festivities with care.

BALLAST
BUFFER
ENGINE
FIREBOX
FISHPLATE
GIBBEN QUARRY
LOCOMOTIVE
PULLMAN
RAILWAY
SLEEPER
TIPTON HILLS
TUNNEL
WATERSTOCK
WHARTSON HALL

K	C	O	T	S	R	E	T	A	W	A	K	D	C	L
S	H	E	D	E	C	U	R	K	E	P	M	N	B	L
L	L	Y	J	K	P	L	S	O	W	H	K	V	O	T
E	N	S	W	B	F	I	R	E	B	O	X	Z	X	H
E	Z	X	K	X	B	A	L	L	A	S	T	M	J	V
P	J	Y	R	R	A	U	Q	N	E	B	B	I	G	E
E	V	I	T	O	M	O	C	O	L	O	T	Q	S	N
R	H	R	X	R	A	I	L	W	A	Y	K	K	I	
T	P	I	K	N	Y	B	T	E	Q	L	Q	W	Z	G
R	U	L	L	A	H	N	O	S	T	R	A	H	W	N
E	U	N	B	J	I	Z	M	A	O	L	O	C	V	E
F	K	W	N	D	P	U	L	L	M	A	N	R	E	W
F	V	A	B	E	F	I	S	H	P	L	A	T	E	S
U	D	W	S	L	L	I	H	N	O	T	P	I	T	D
B	S	Z	L	H	G	A	Q	D	Q	F	F	E	L	Z



Previous COMPETITION answer

Unless I'm mistaken, nobody got this one!

AND THE ANSWER IS:

On a trip to the **National Memorial Arboretum** at Alrewas (DE13 7AR), your Editor found this!



Details and current COVID restrictions at:

<https://www.thenma.org.uk/visit-us/plan-your-visit/getting-here>

Here's a WORD PUZZLE for you to pass those days between Club Meetings!

How many words of 4 or more letters can you make out of:

“THE WEST MIDLANDS N GAUGE CLUB” ?

SO, PRINT OFF THIS PAGE and use the area below for your answers:

Joke of the day

I know someone who tried to run away after camouflaging a railway. He tried to cover his tracks.

unknown AUTHOR (probably best)

SUPPLIERS

OXFORD



<https://www.oxforddiecast.co.uk/collections/1-148>

Oxford Diecast Foden FG8 Wheel Dropside

Dennys Transport

Product Code: NFG014

£6.95

This replica truck is based on the original ODH 255 which had been registered in Walsall on 22nd January 1951.

The colourful graphics of Denny's Transport indicate it travelled far and wide fulfilling daily services to England, Scotland and Wales. The pale blue cab with black interior sits on a red chassis while the royal blue dropside trailer with brown planked out flatbed section has a wealth of cream lettering along the sides.

The wheel arches and fuel tanks are lined out in cream too. The distinctive Foden radiator grille is black and silver with the diamond signature panel in silver on a pale blue ground.

Add this colourful piece to your varied 1:148 line-up of classic Foden trucks from the 1950s.

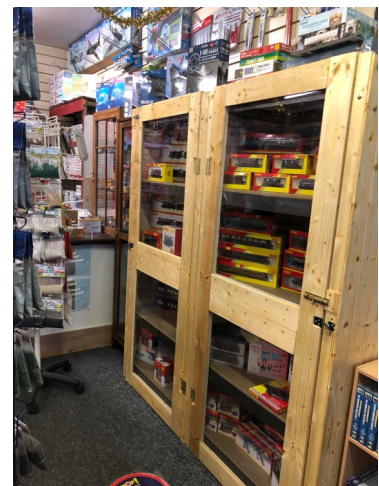


MODEL SHOPS

Come and see Ritchie in his well stocked shop
Yes there's loads of N Gauge as well as tools and paints and.....

<https://www.scalemates.com/shops/shop.php?id=2941>

go on! click the link above for **address details and opening hours**, it's a really friendly shop and COVID aware, all current precautionary advice, and more, is being adhered to - you can mention Vince's name on entry and you'll be welcomed heartily (*must remember to copy newsletter to Ritchie - note to self Ed*).



GENERAL NOTICES

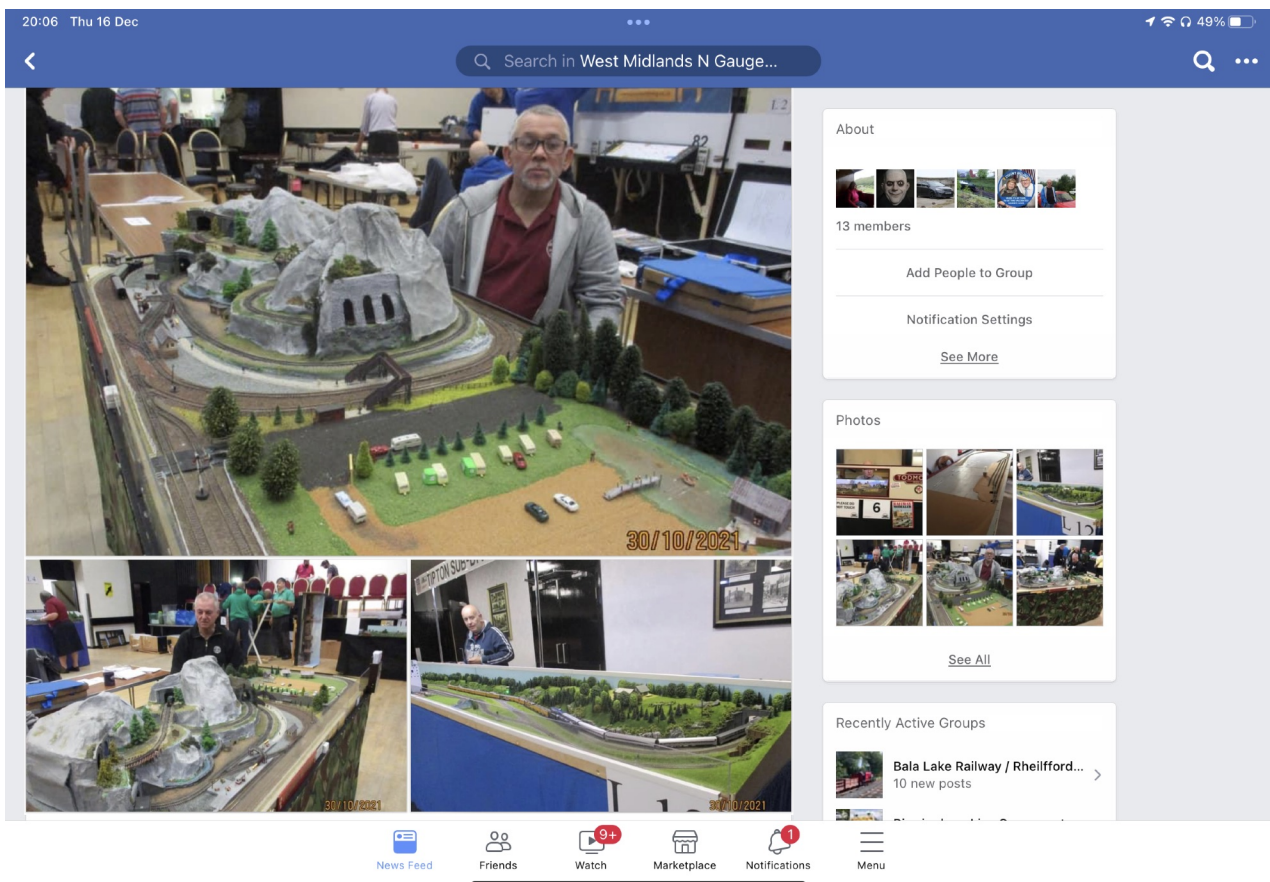
With the club's reopening let's continue to spread the word and keep our fantastic hobby on the move.....

Social Media: **STAR FACEBOOK PAGE**

Just type in **West Midlands N Gauge Club**

(Our very own Facebook page - get on it, get friending, come on let's make this the viable partner to our fantastic Newsletter)

EXTRACT FROM THE ACTUAL PAGE IN DECEMBER 2021



EXTRACT FROM THE ACTUAL PAGE IN DECEMBER 2021




Here's a selection of the recent posts on our Facebook page: please contact DG through the site for details if you want to join. I'll let the images speak for themselves.....Ed

< Search in West Midlands N Gauge...

David John Griffin
Admin · 30 Oct · 📷

Great day at Birmingham model rail show at Arden hall



About


13 members

Add People to Group

Notification Settings

[See More](#)

Photos



[See All](#)

Recently Active Groups

Bala Lake Railway / Rheilffordd...
10 new posts

< Search in West Midlands N Gauge Club

Jeremy Edwards is at The Trinity Centre.
2 Oct · Sutton Coldfield · 📷

Whartson Hall at the 2021 Sutton Coldfield Railway Society exhibition.
The layout was very popular with the younger visitors as they could see modern trains running in a landscape.



RETURN JOURNEY

Otherwise known as any other business

1. It is coming up to our Club's 27th year, and we're open again.
2. Young adults and others are getting their boosters!
3. Only one image has been received for the rogues' gallery.
4. Hope you enjoyed the WORD SEARCH.
5. Now who on earth could this be? - thinking of you always, our friend.

More Exhibition News:

Jim Webster has been scouring YouTube and has found a 12 minute video covering the Birmingham Show. All club and members' exhibits are on there. I think the YouTuber was particularly taken with Nigel's layout (and possibly my driving - not) as there is a lot of coverage of Tipton Sub-division.



The Youtuber is [Steamjammer](#) - put that into search as one word and you will find the video called Birmingham MRC Annual Exhibition. It's good quality footage. JE

EDITORIAL IDEAS BOX

If all else fails, we still have our friendly, little Club - dedicated to all things N' Scale, but mostly trains and railway related stuff - not forgetting the cakes of course!

Just a reminder that anytime is the right time if you have any modelling related memories, images or anecdotes you would like to share with everyone, then email me at: art1san1957@icloud.com

Please note that any recommended suppliers, ideas or suggestions found in this not-for-profit, and totally free newsletter, are for readers' personal use only, any inaccuracies are regretted and not deemed to be life-threatening.

CREDITS

All images in this issue are submitted, in the main, by the author of each article, any copying, scanning or pasting etc, etc, blah, blah, are at your own risk - GDPR apply.

Special Thanks to the following Club Members & Guest for their articles:
Everyone on our Facebook pages, Rodney Hodge, Ken Jones and Leslie Jones.



Edited Using Pages app
on Apple iPad Pro 2019 running iOS for iPad v15.1
(other devices, apps & operating systems are available - apparently)Ed





NOTICEBOARD INFORMATION

Meetings will be as follows, and are to be held at:

Tipton Green Methodist Church Hall
Park Lane West
TIPTON
West Midlands
DY4 8LD

WMNGC MEETING DATES 2022

Saturday 8th and 22nd January (new dates due to 1st Jan being a Sat)
Saturday 5th and 19th February
Saturday 5th and 19th March
Saturday 2nd and 16th April
Saturday 7th and 21st May
Saturday 4th and 18th June
Saturday 2nd and 16th July
Saturday 6th and 20th August
Saturday 3rd and 17th September
Saturday 1st and 15th October
Saturday 5th and 19th November
Saturday 3rd December (including AGM)

For more N' Scale information and a host of other interesting topics

Visit our Club Website <http://www.wmngaugeclub.co.uk/>

BE HAPPY AND KIND TO OTHERS

Meetings will be held following central government and local guidelines, in consultation with our hosts.

Any changes will appear in our Newsletters, with emails/post & calls for urgent info.